

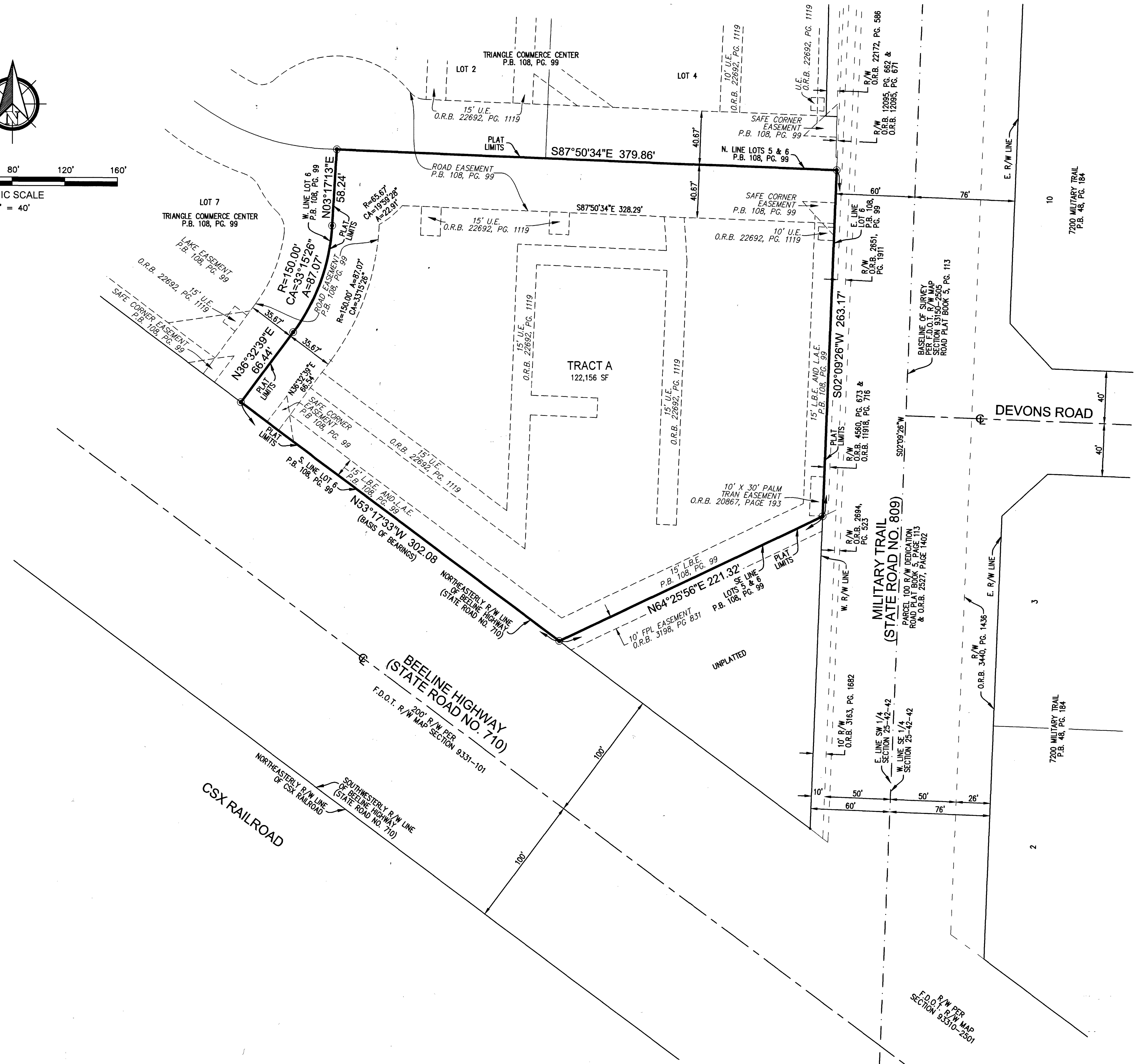
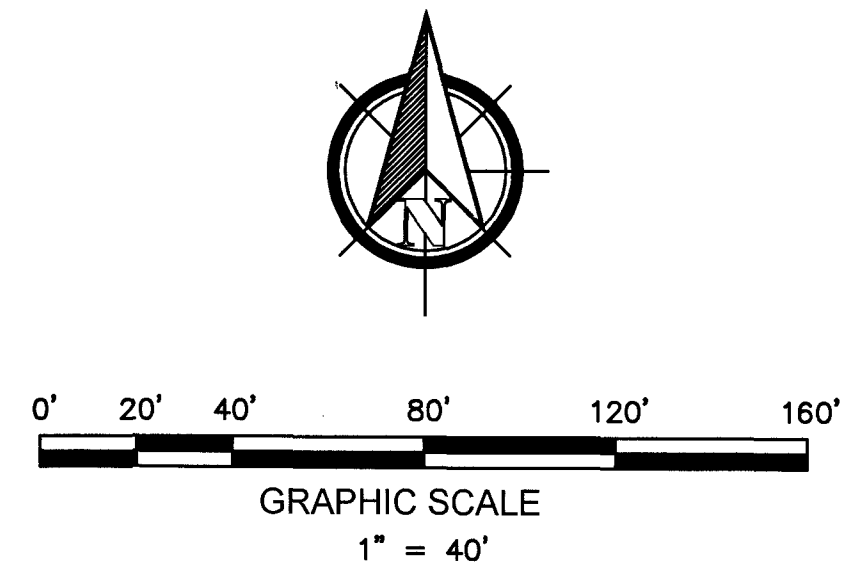
THIS INSTRUMENT WAS PREPARED BY  
DONNA C. WEST OF  
**PULICE LAND SURVEYORS, INC.**  
CERTIFICATE OF AUTHORIZATION NO. LB3870  
5381 NOB HILL ROAD  
SUNRISE, FLORIDA 33351  
954-572-1777

# RACETRAC BEELINE

A REPLAT OF LOTS 5 & 6, TRIANGLE COMMERCE CENTER (P.B. 108, PG. 99-100)  
IN SECTION 25, TOWNSHIP 42 SOUTH, RANGE 42 EAST,  
CITY OF RIVIERA BEACH, PALM BEACH COUNTY, FLORIDA

175

SHEET 2 OF 2 SHEETS



- LEGEND & ABBREVIATIONS:**
- = SET PERMANENT REFERENCE MONUMENT  
4"X4"X24" CONCRETE MONUMENT WITH 2"  
ALUMINUM DISK STAMPED "PRM LB 3870"  
(UNLESS OTHERWISE NOTED)
  - ⊕ = CENTERLINE
  - A = ARC LENGTH
  - CA = CENTRAL ANGLE
  - F.D.O.T. = FLORIDA DEPARTMENT OF TRANSPORTATION
  - I.D. = IDENTIFICATION
  - L.A.E. = LIMITED ACCESS EASEMENT
  - LB = LICENSED BUSINESS
  - L.B.E. = LANDSCAPE BUFFER EASEMENT
  - O.R.B. = OFFICIAL RECORDS BOOK
  - P.B. = PLAT BOOK
  - PG. = PAGE
  - PRM = PERMANENT REFERENCE MONUMENT
  - R = RADIUS
  - R/W = RIGHT-OF-WAY
  - SF = SQUARE FEET
  - U.E. = UTILITY EASEMENT

B

F.D.O.T. R/W PER  
SECTION 9.3310-2501